

PRELIMINARY




Classico
AT MADEIRA



camhomes.com

Welcome

Classico at Madeira by Cambridge Homes features five elegant residences on spacious quarter-acre home sites. Innovative floorplans showcase dramatic entries, expertly-equipped kitchens and luxurious master suites.


Open floorplans provide opportunities for family living, while secluded spaces like master suites with Roman walk-in showers and oval soaking tubs enable you to retreat for some well deserved quiet time.

These unique residences are enhanced with a generous offering of standard amenities, including granite kitchen counters and backsplash and warm tan wall paint with white glossy trim to highlight our award-winning architecture. Other amenities include distinctive finishes like crown molding in the formal areas; elegant oil-rubbed bronze hardware; upgraded light fixtures with choice of finish; and hand-set tile at the entry, master bath and kitchen. An abundance of arches, art niches and other architectural details provide beauty and symmetry. Built to be 20% more energy efficient than stringent California code requires, these are the largest residences in our area to be designated “Green” by the California Green Builder Program.

To support the indoor / outdoor lifestyle, each residence features an entry, side or interior courtyard for expanded living space. Residences range from 3,162 - 4,358 square feet with 4 – 6 bedrooms and 3 – 5.5 baths.



10008 ALBACORE WAY, ELK GROVE
PH (916) 714-0104 . FX (916) 714-0145
CLASSICO@CAMHOMES.COM
CAMHOMES.COM/CLASSICO

 At Cambridge Homes we are proud to offer our home buyers More. More standard amenities. More architectural details. More value for your home buying dollar. Following are highlights of the standard amenities included in the residences at Clássico at Madeira.

Standard Amenities Highlights

QUALITY EXTERIOR DETAILING

- Historically-Accurate Exterior Architecture, Including Santa Barbara, Spanish, Classic Italian, French Cottage & Traditional Styles
- Spacious Courtyards for Expanded Living Space
- Decorative Gutters & Downspouts
- Elegant Eight-Foot Raised Panel Entry Doors
- Quality Aged-Bronzed Hardware
- Garages Fully Sheet Rocked, Textured & Painted
- Garage Doors With Elevation-Specific Skylights & Automatic Opener on Double Bay

ELEGANTLY-CRAFTED INTERIORS

- Hand Set 12" x 12" Ceramic Tile Entry
- Abundance of Windows & Glass Doors for Natural Light
- Dramatically-Defined Entries
- Warm Tan Wall Paint with Glossy White Trim to Highlight Distinctive Architecture
- Oak Cabinetry with Hidden Hinges, Melamine Interiors, With Choice of Finish & Upgraded Knobs
- Double-Paneled Arch-Accented Doors
- Designer Series Lever Style Aged Bronze Door Hardware
- Crown Molding at Living & Dining Rooms & Master Bedroom (per plan)
- Premium-Sized 5 1/4" Baseboards
- Elegant Chrome Kohler® Coralais Plumbing Fixtures

- High-Efficiency Gas Appliance Fireplace with Designer Precast Concrete Surround
- Extra Wide, Recessed Media Niche in Family Room
- Upgraded Light Fixtures with Choice of Brushed Nickel or Cobblestone Finish
- Extensive Art Niches, Arches & Architectural Details
- Lacquered Oak Handrails & Spindles at Staircase
- Upgraded Reversible Ceiling Fan with Light Kits at Family Room, Master & Bonus Room; Pre-Wire for Fan at Secondary Bedrooms, Dens, Studio & Office (per plan)

TECHNOLOGY

- Structured Wiring Hub Includes Cable TV & Telephone Network Capabilities (HDTV Compliant) at Media Niche & Master Bedroom & Optional Media Room (per plan)
- Security Alarm System (not monitored)
- Pre-Wired for I-Pod Docking Station
- Telephone Outlet at Kitchen and Master Bedroom
- Satellite Pre-Wire

LUXURIOUS MASTER SUITE

- Private Transitional Entrance to Master Bedroom
- Elegant Crown Molding
- Oversized Walk-In Closet(s) with Double-Sided Mirrored Door(s)

- Richly-Appointed Master Bath Featuring:
 - Six-Foot Oval Soaking Tub with Ceramic Tile Surrounds
 - Separate Ceramic Tiled Mud-Set Shower with Roman Walk-Up Entry or Glass Enclosure (per plan)
 - Hand Set 4" x 4" Ceramic Tile Countertops
 - Hand Set 12" x 12" Ceramic Tile Flooring

EPICUREAN KITCHEN

- Luxurious Granite Counters & Back Splash in Eight Colors
- Hand Set 12" x 12" Ceramic Tile at Kitchen & Breakfast Nook Floor
- Quality General Electric Appliances:
 - Deluxe 36" Five Burner Sealed Gas Cook Top
 - Upgraded Profile Hood to Match Cook Top
 - Built-In 30" Electric Self-Cleaning Oven
 - Built-In Microwave Oven with Matching Trim Kit
 - Multi-Cycle Dishwasher with Power Saver Options
- Step-Saving Food Preparation Island
- Kohler® Delafield Cast Iron Double Sink
- Pull-Out Pot Drawers Beneath Cook Top
- Strategically-Placed Can Lights & Plugs

EFFICIENCY & CONVENIENCE

- ComfortWise Green Community Providing Energy Savings of More Than 20% Above Stringent California Code as Well as Utilizing Sustainable Products, Conserving Water & Recycling Construction Waste
- Radiant Barrier for Superior Energy Savings
- Energy-Saving Vinyl Dual Pane Lo-E Suncoat Max Windows & Sliding Glass Doors
- Gas Forced-Air Heating System & Integral Central Air Conditioning
- Dual-Zoned Climate Control HVAC System with Two Clock Thermostats
- Oversized Laundry Rooms with:
 - Window or Door for Natural Light
 - Extra Deep Laundry Sink
 - Hand Set 6" x 6" Ceramic Tile Countertop
 - Hand Set 12" x 12" Ceramic Tile Floor
 - Clothes Dryer Vent with Both Gas and Electric Outlets
- 75-Gallon, Energy Efficient, Natural Gas Hot Water Heater
- DuPont Tyvek® Superior Quality Moisture Barrier Wrapping Exterior



SANTA BARBARA



FRENCH COTTAGE



TRADITIONAL




Classico
AT MADEIRA

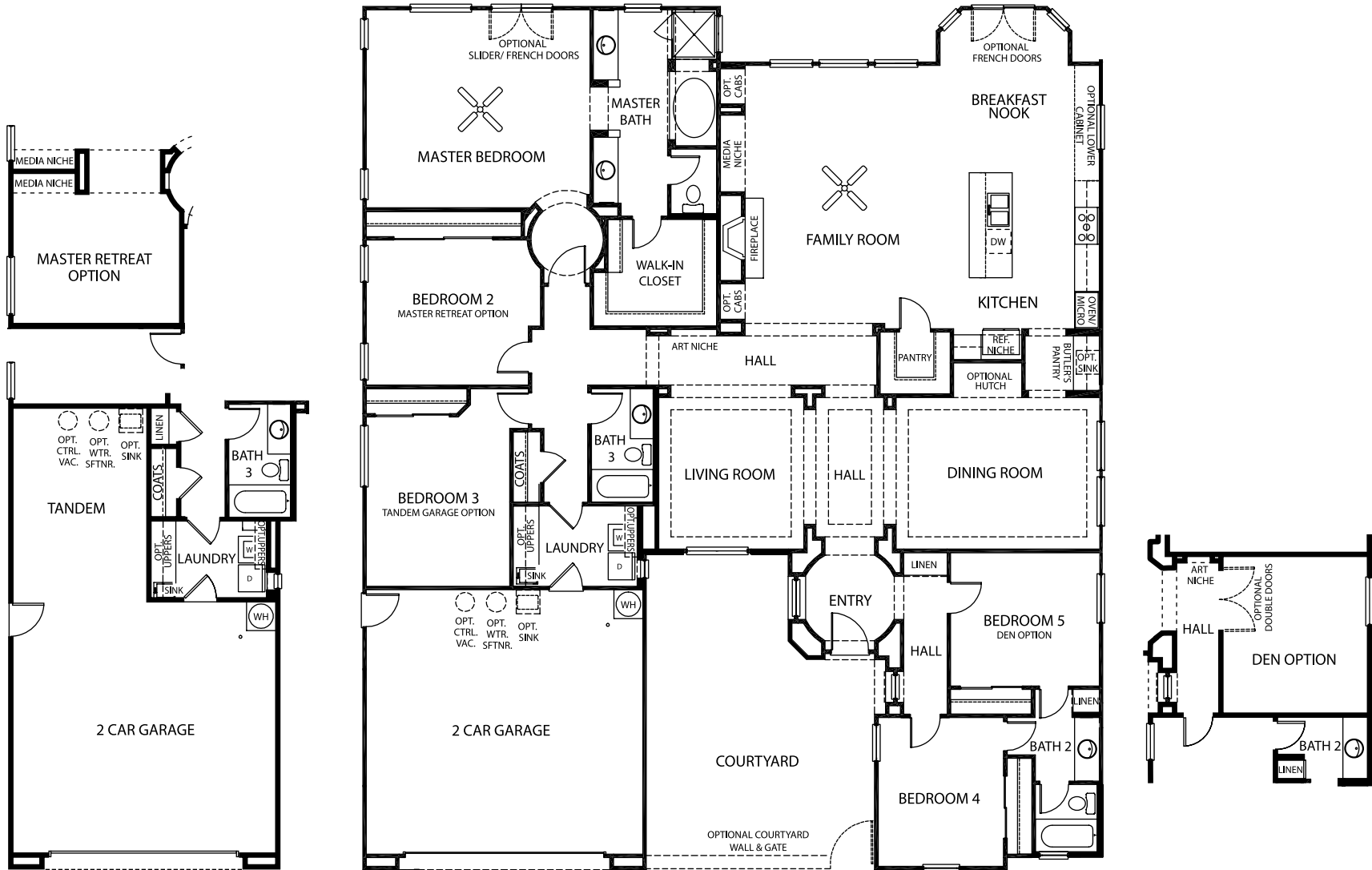
THE RENOIR

Five Bedrooms

Three Baths

3,162 S.F. Approx.

Plàssico at Madeira - The Renoir



TANDEM GARAGE OPTION


Classico
AT MADEIRA

THE DA VINCI
Four to Five Bedrooms
Two and a Half to Three Baths
3,400 - 3,569 S.F. Approx.

SPANISH



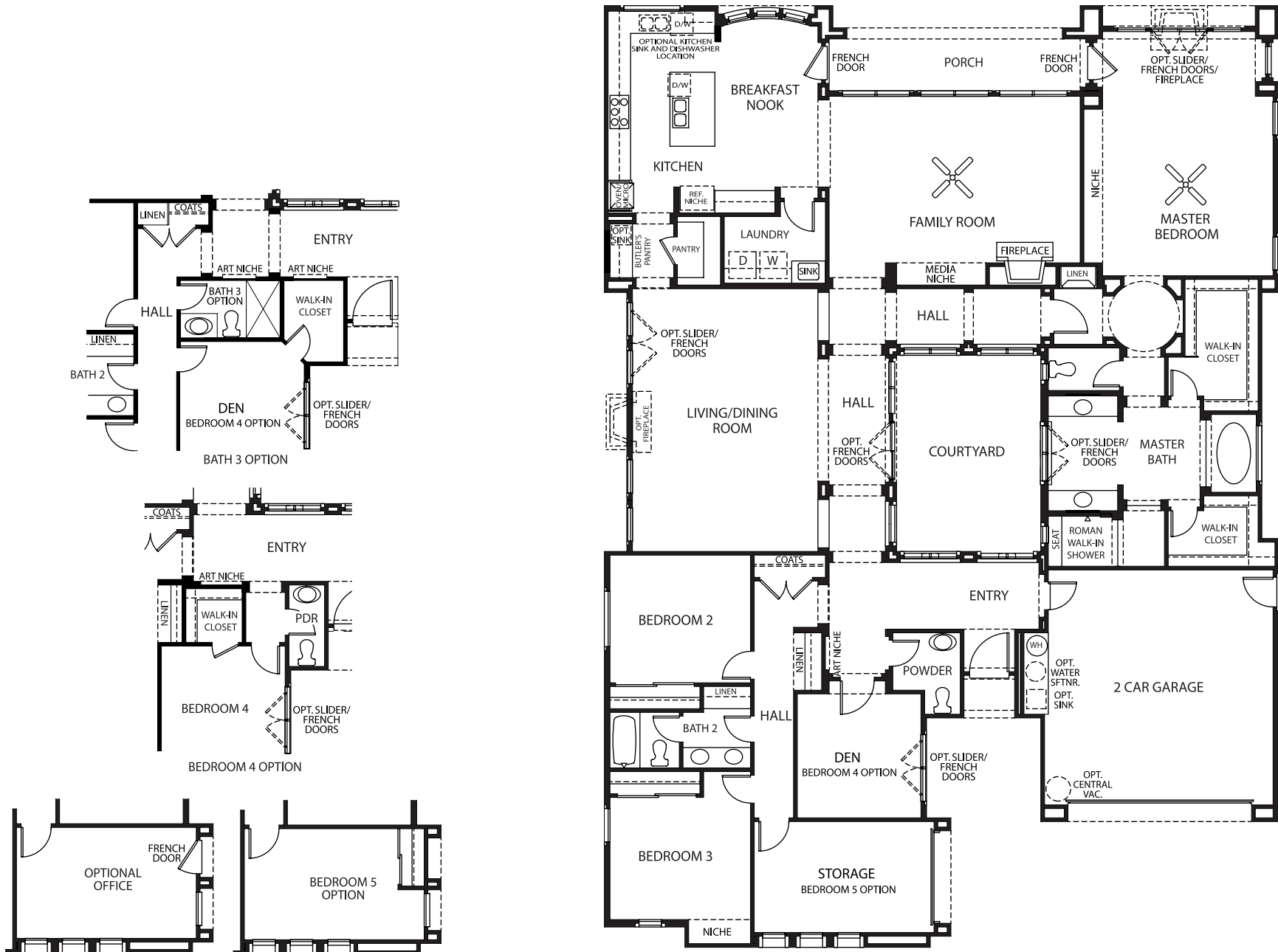
FRENCH COTTAGE



TRADITIONAL



Plàssico at Madeira - The Da Vinci



SANTA BARBARA



CLASSIC ITALIAN



TRADITIONAL




Classico
AT MADEIRA

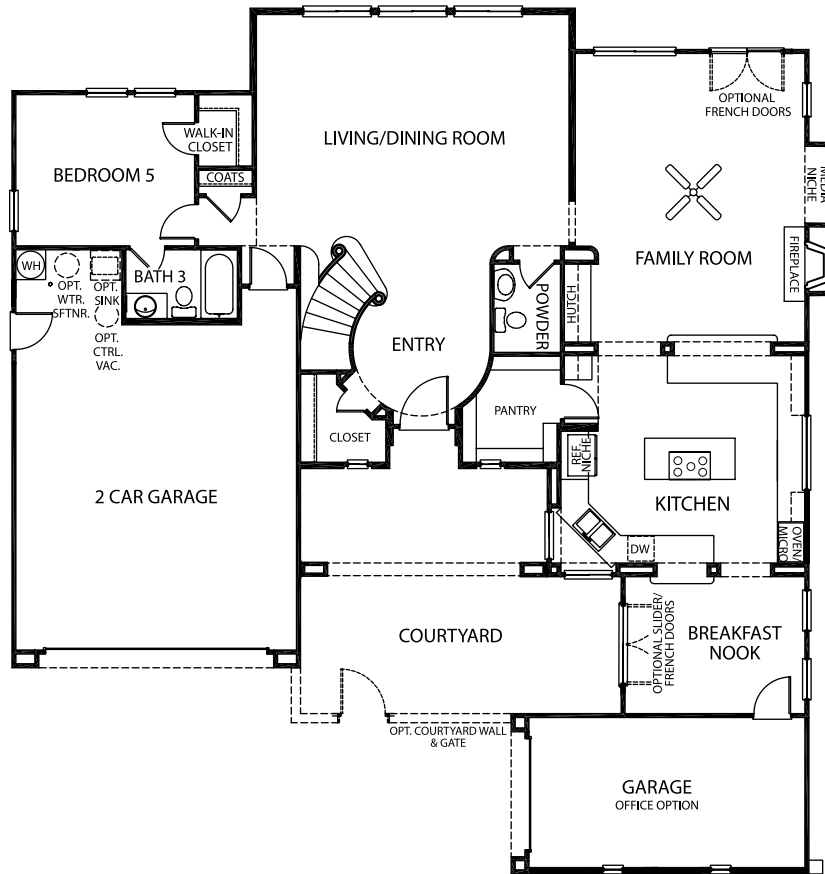
THE PICASSO

Five Bedrooms

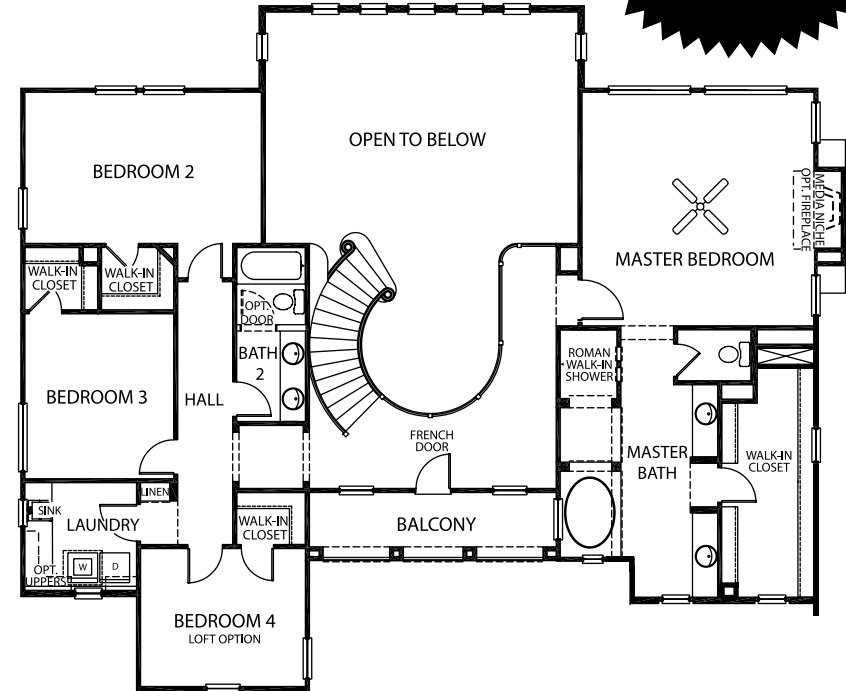
Three and a Half Baths

3,469 - 3,718 S.F. Approx.

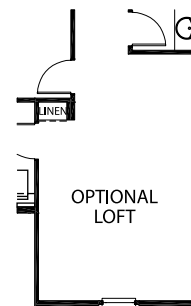
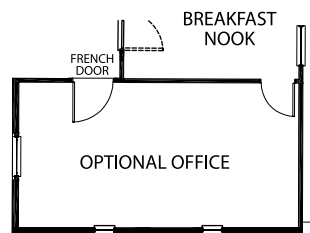
Plàssico at Madeira - The Picasso



Lower Floor



Upper Floor



SANTA BARBARA



FRENCH COTTAGE



TRADITIONAL




Classico
AT MADEIRA

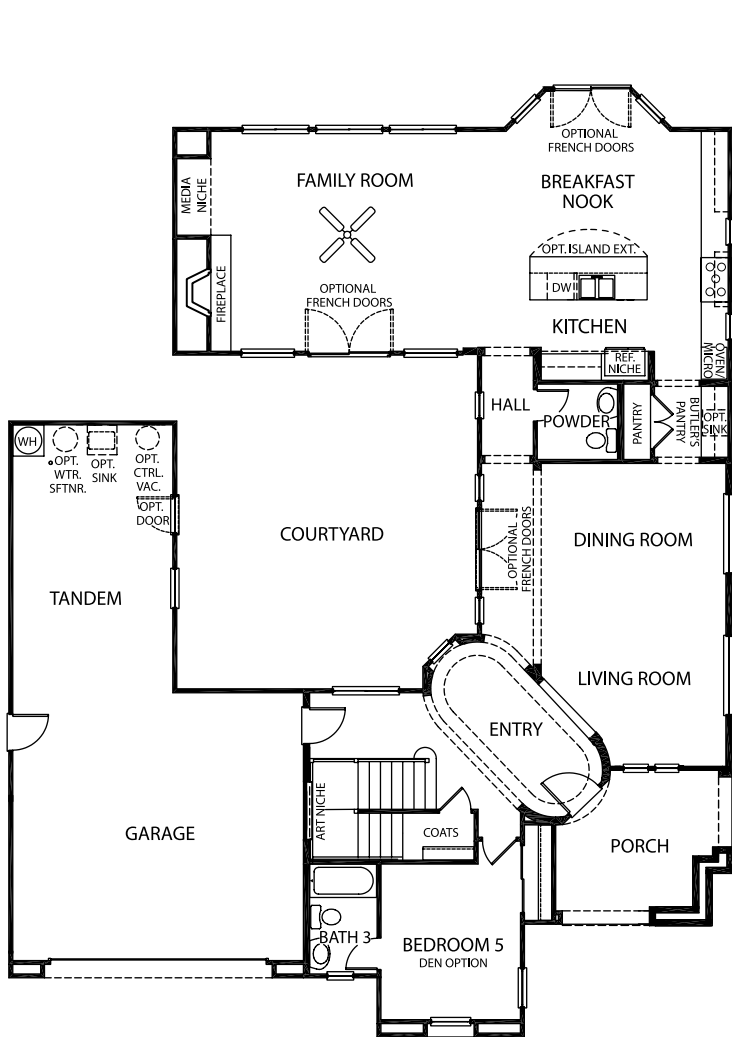
THE REMBRANDT

Five to Six Bedrooms

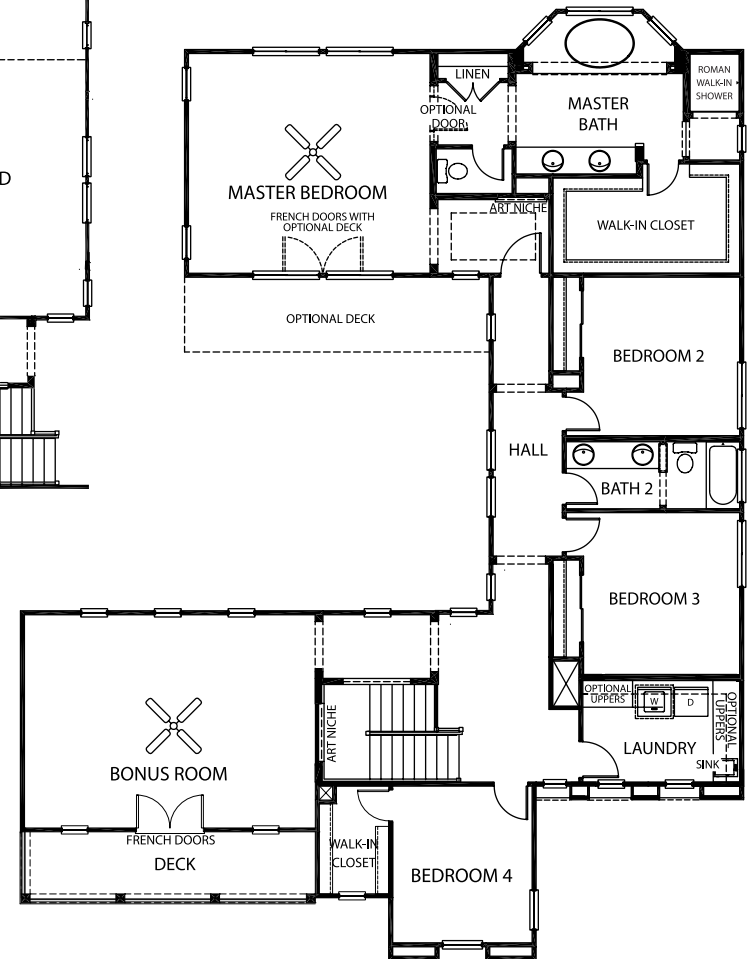
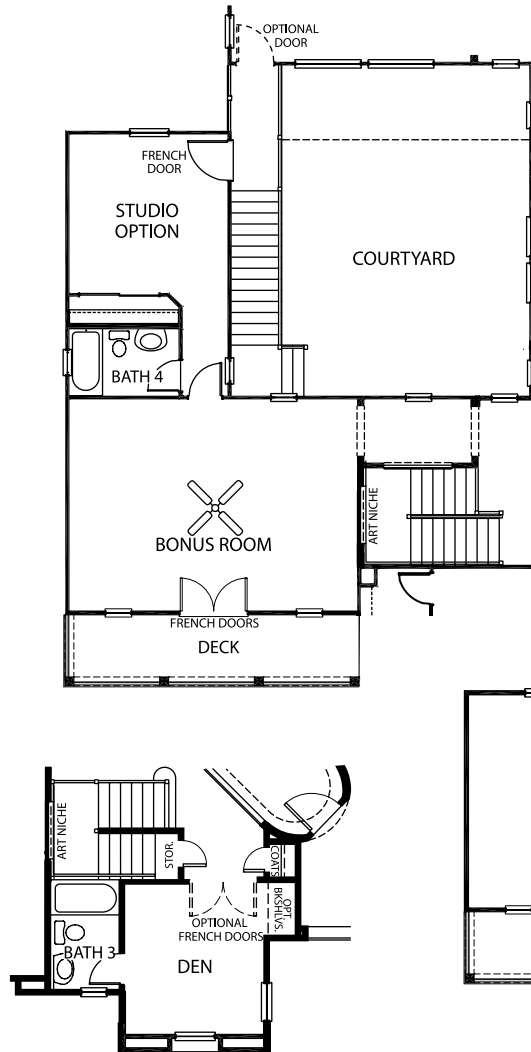
Three and a Half to Four and a Half Baths

3,858 - 4,108 S.F. Approx.

Plàssico at Madeira - The Rembrandt



Lower Floor



Upper Floor

SPANISH



CLASSIC ITALIAN



TRADITIONAL




Classico
AT MADEIRA

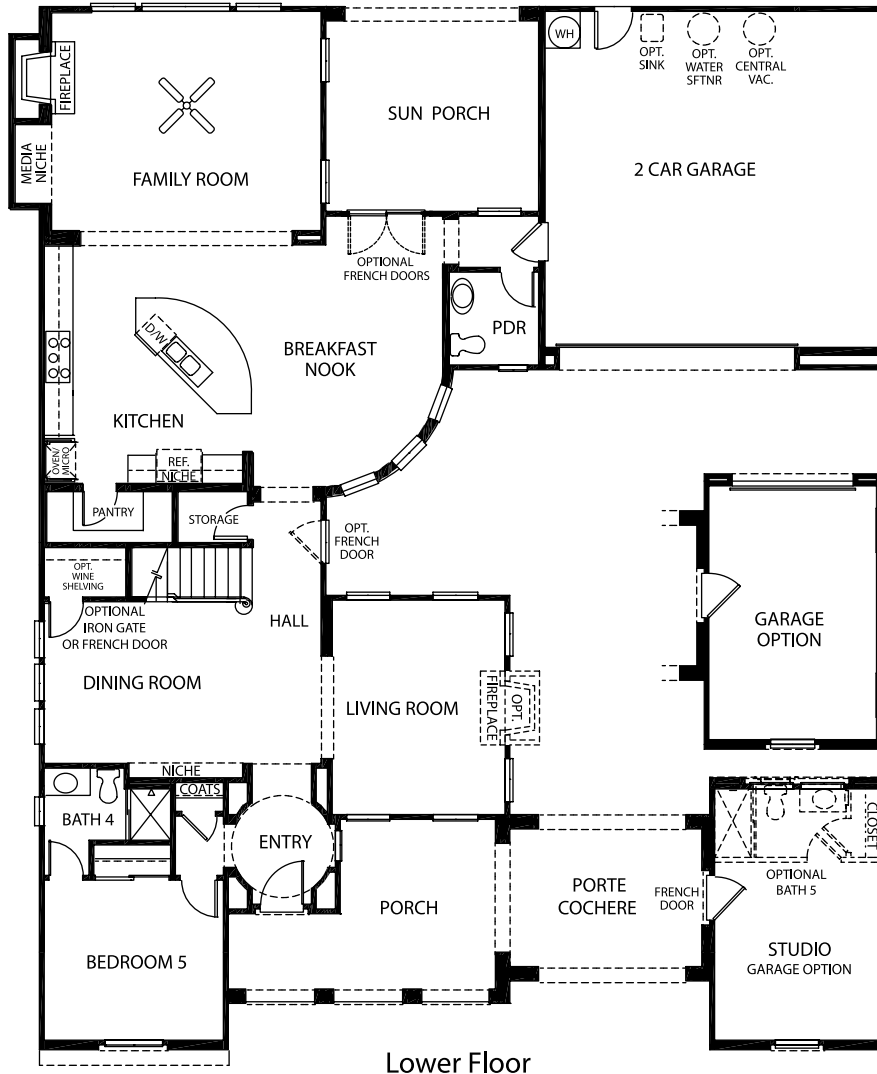
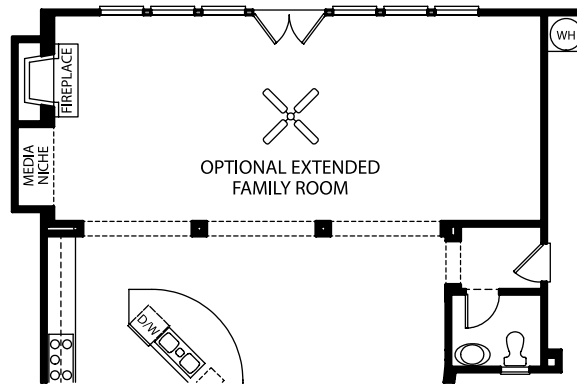
THE MICHAELANGELO

Six Bedrooms

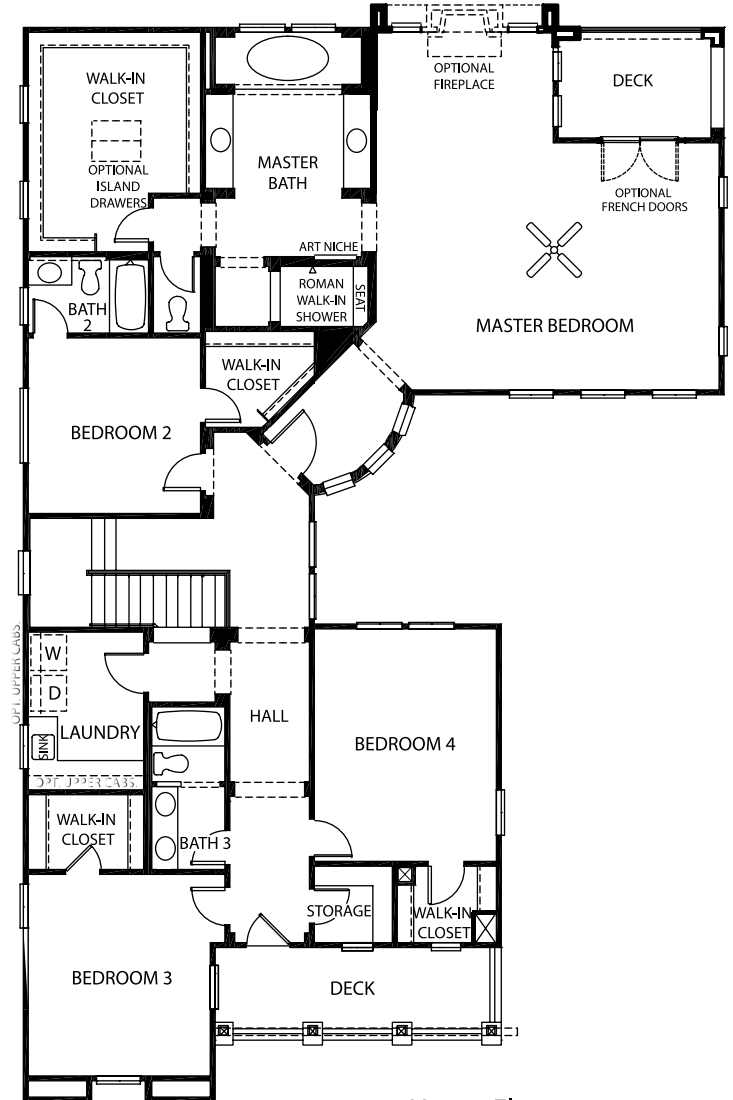
Four and a Half to Five and a Half Baths

4,140 - 4,358 S.F. Approx.

*Plàssico at Madeira -
The Michaelangelo*



Lower Floor



Upper Floor

Our Story

CAMBRIDGE HOMES...BUILDING YOUR PERSONAL SPACE.

Founded in Sacramento, Cambridge Homes opened its doors with a single vision – to build architecturally-distinct homes that offer more. More architectural details. More standard amenities. More space planning options. More of the things we would want for our own families.

As a locally-owned and operated family business, we believe our responsibility extends beyond our homes. It is a priority for us to contribute to the communities in which we build, both through community involvement and enhanced community architecture. We specifically design our communities to provide a wealth of architectural diversity.

By providing distinctive architecture options and encouraging individual home personalization, our residences are as unique as the families who call them home. And each Cambridge home must pass the same rigorous test – it must be a home we would design and build for our own families.

It would be our privilege to build your personal space.



Our Values

CORE PURPOSE

TO IMPROVE THE QUALITY OF LIFE OF
OUR HOME BUYERS, OUR COMMUNITY AND OURSELVES.

CORE VALUES

LOYALTY

HONORING OUR COMMITMENTS AND EACH OTHER.

RESPECT

VALUING OTHERS. ACTIVELY LISTENING.
EMBRACING DIFFERENCES.

INTEGRITY

ACTING HONORABLY AND HONESTLY.

COMMUNITY

ENRICHING THE LIVES OF OTHERS.

FUN

LIVING PASSIONATELY AND LAUGHING OFTEN.