

PRELIMINARY




Trésor
AT MADEIRA



camhomes.com

Welcome

Trésor at Madeira by Cambridge Homes features five innovative one and two story residences with flexible floorplans. Each home is graced with the arches, art niches and other architectural details, which are hallmarks of a Cambridge home.

These elegant, yet comfortable residences are designed as a haven for busy families. Home chefs will appreciate our expertly-equipped kitchens. The whole family will enjoy the spacious family and bonus rooms for together time. Fine details like Roman walk-in showers and oval soaking tubs make the master bath feel like your own personal spa.

A generous offering of standard amenities enables you to maximize your home buying dollar and select the structural and designer options that will make our house your family's home. Standard amenities include eight color choices of granite kitchen counters and backsplash and warm tan wall paint with white glossy trim to highlight the distinctive architecture of these sophisticated homes. Additional amenities include crown molding in the formal areas; upgraded light fixtures with choice of finish, and hand set tile at the entry kitchen, bathrooms and laundry. Architectural details like arches, art niches and an abundance of windows for natural light contribute to the distinctive design of each home.

Generously-sized courtyards provide expanded living space and opportunities for indoor / outdoor living. Residences range from 2,342 - 3,699 square feet with 3 - 5 bedrooms and 2.5 - 4.5 baths. ❁



9869 WINKLE CIRCLE, ELK GROVE
PH (916) 685-0654 . FX (916) 685-3523
TRESOR@CAMHOMES.COM
CAMHOMES.COM/TRESOR



At Cambridge Homes we are proud to offer our home buyers More. More standard amenities. More architectural details. More value for your home buying dollar. Following are highlights of the standard amenities included in the residences at Trésor at Madeira.

Standard Amenities Highlights

QUALITY EXTERIOR DETAILING

- Historically-Accurate Exterior Architecture, Including Santa Barbara, Monterey, Classic Italian & French Cottage Styles
- Charming Covered Porch Entry
- Spacious Courtyards for Expanded Living Space (per plan)
- Decorative Gutters & Downspouts
- Elegant Eight-Foot Raised Panel Entry Doors
- Quality Aged-Bronzed Hardware
- Garage Doors with Elevation-Specific Skylights & Automatic Opener on Double Bay
- Garages Fully Sheet Rocked, Textured & Painted

ELEGANTLY-CRAFTED INTERIORS

- Hand Set 12" x 12" at Ceramic Tile Entry & Powder Room
- Abundance of Windows & Glass Doors for Natural Light
- Dramatically-Defined Entries
- Warm Tan Wall Paint with Glossy White Trim to Highlight Distinctive Architecture
- Oak Cabinetry with Hidden Hinges, Melamine Interiors, With Choice of Finish & Upgraded Knobs
- Double-Paneled Arch-Accented Doors
- French Glass Doors to Outer Areas
- Designer Series Lever Style Aged Bronze Door Hardware
- Crown Molding at Living & Dining Rooms & Master Bedroom (per plan)

- Premium-Sized 5 ¼" Baseboards
- Elegant Chrome Kohler® Coralais Plumbing Fixtures
- High-Efficiency Gas Appliance Fireplace with Designer Precast Concrete Surround
- Extra Wide, Recessed Media Niche in Family Room
- Upgraded Light Fixtures with Choice of Brushed Nickel or Cobblestone Finish
- Extensive Art Niches, Arches & Architectural Details
- Lacquered Oak Handrails & Spindles at Staircase
- Upgraded Reversible Ceiling Fan with Light Kits at Family Room, Master, Bonus Room & Media Room (per plan); Pre-Wire for Fan at Secondary Bedrooms & Dens

TECHNOLOGY

- Structured Wiring Hub Includes Cable TV & Telephone Network Capabilities (HDTV Compliant) at Media Niche & Master Bedroom
- Telephone Outlet at Kitchen and Master Bedroom
- Satellite Pre-Wire
- Security Alarm System (not monitored)
- Pre-Wire for iPod Docking Station

LUXURIOUS MASTER SUITE

- Private Transitional Entrance to Master Bedroom
- Elegant Crown Molding

- Oversized Walk-In Closet(s) with Double-Sided Mirrored Door(s)
- Richly-Appointed Master Bath Featuring:
 - Sensual Oval Soaking Tub with Ceramic Tile Surrounds
 - Separate Ceramic Tiled Mud-Set Shower with Roman Walk-Up Entry or Glass Enclosure (per plan)
 - Hand Set 4" x 4" Ceramic Tile Countertops
 - Hand Set 12" x 12" Ceramic Tile Floor

EPICUREAN KITCHEN

- Luxurious Granite Counters & Back Splash in Eight Colors
- Hand Set 12" x 12" Ceramic Tile at Kitchen & Breakfast Nook Floor
- Quality General Electric Appliances:
 - Deluxe 36" Five Burner Sealed Gas Cook Top
 - Upgraded Profile Hood to Match Cook Top
 - Built-In 30" Electric Self-Cleaning Oven
 - Built-In Microwave Oven with Matching Trim Kit
- Multi-Cycle Dishwasher with Power Saver Options
- Step-Saving Food Preparation Island
- Kohler® Delafield Cast Iron Double Sink
- Pull-Out Pot Drawers Beneath Cook

Top for Easy Accessibility

- Strategically-Placed Can Lights & Plugs for Cooking Convenience

EFFICIENCY & CONVENIENCE

- Energy-Saving Vinyl Dual Pane Lo-E Suncoat Max Windows & Sliding Glass Doors
- Radiant Barrier for Superior Energy Savings
- Gas Forced-Air Heating System & Integral Central Air Conditioning
- Dual-Zoned Climate Control HVAC System with Two Clock Thermostats
- Oversized Laundry Rooms With:
 - Window or Door for Natural Light
 - Extra Deep Laundry Sink
 - Hand Set 6" x 6" Ceramic Tile Countertop
 - Hand Set 12" x 12" Ceramic Tile Flooring
 - Clothes Dryer Vent with Both Gas and Electric Outlets
- 75-Gallon, Energy Efficient, Natural Gas Hot Water Heater
- DuPont Tyvek® Superior Quality Moisture Barrier Wrapping Exterior

In the interest of continuous improvement, Cambridge Homes reserves the right to make modifications to specifications at any time without notice. Please consult with your community Sales Manager for verification of standard amenities and optional upgrades

SANTA BARBARA



CLASSIC ITALIAN



FRENCH COTTAGE




Trésor
AT MADEIRA

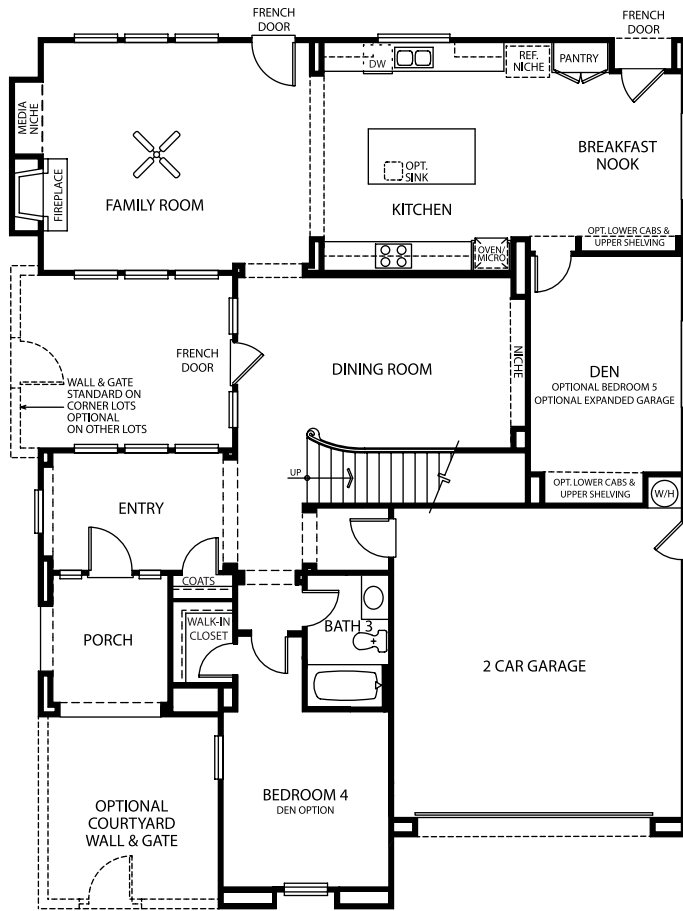
RESIDENCE ONE

Four to Five Bedrooms

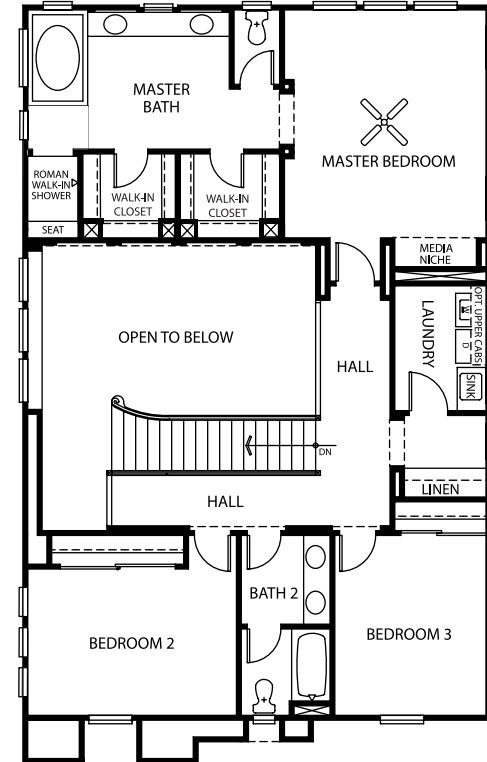
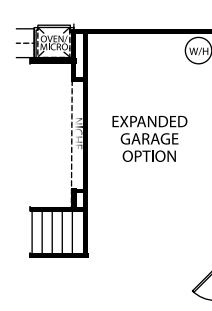
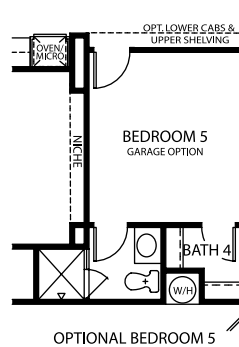
Three to Four Baths

2,963 S.F. Approx.

 *Trésor at Madeira - Residence One*



Lower Floor



Upper Floor


Trésor
AT MADEIRA

RESIDENCE TWO

Four to Five Bedrooms

Three and a Half to Four Baths

3,125 S.F. Approx.

SANTA BARBARA



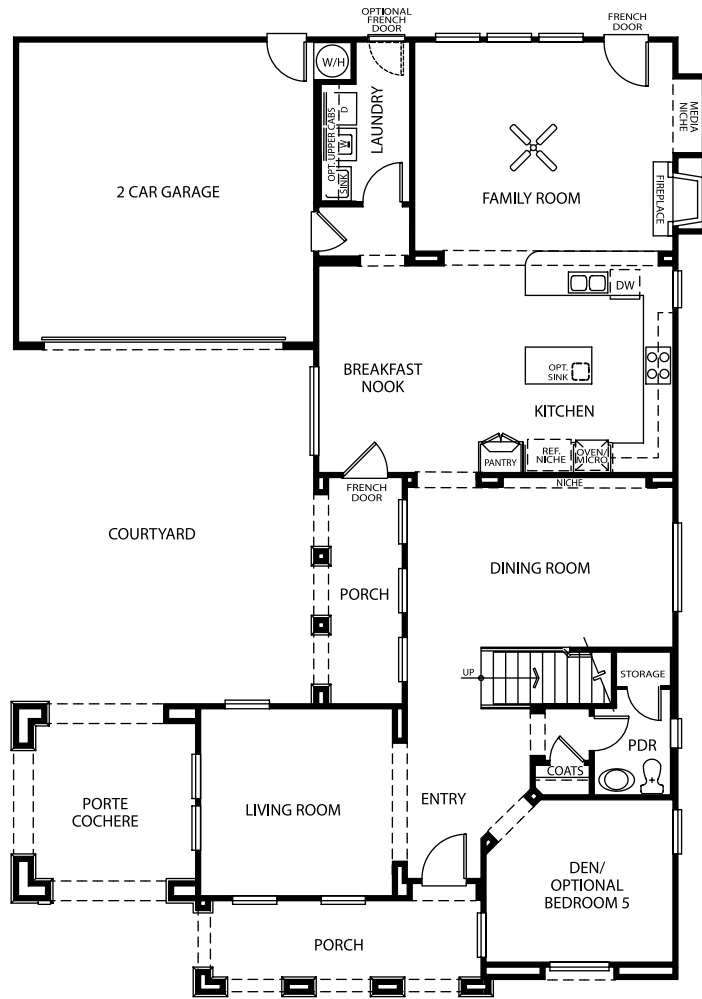
CLASSIC ITALIAN



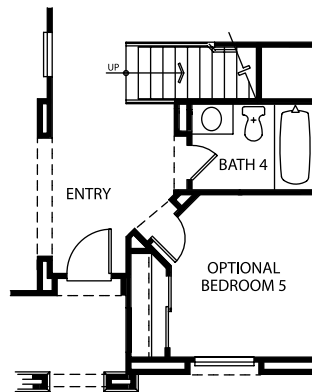
FRENCH COTTAGE



 *Trésor at Madeira - Residence Two*



Lower Floor



Upper Floor

MONTEREY



CLASSIC ITALIAN



FRENCH COTTAGE




Trésor
AT MADEIRA

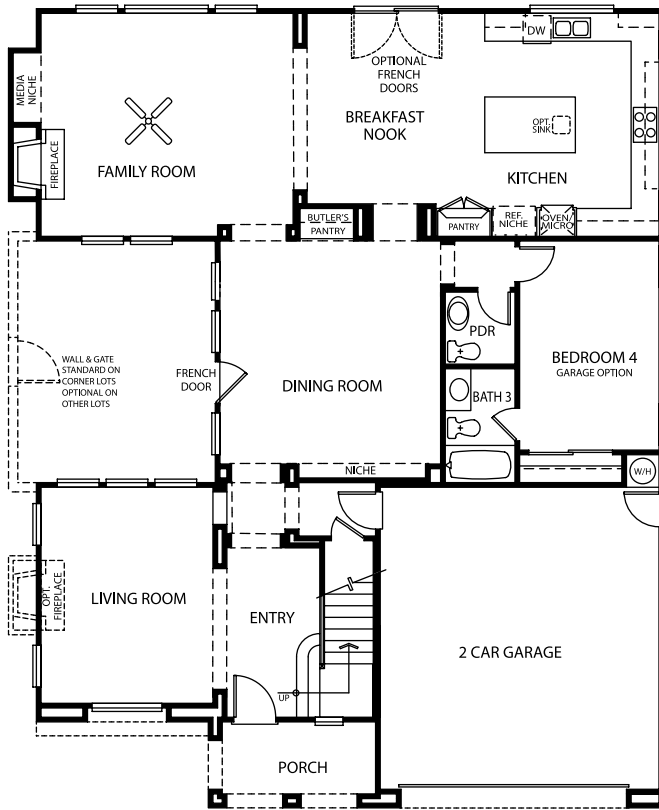
RESIDENCE THREE

Four to Five Bedrooms

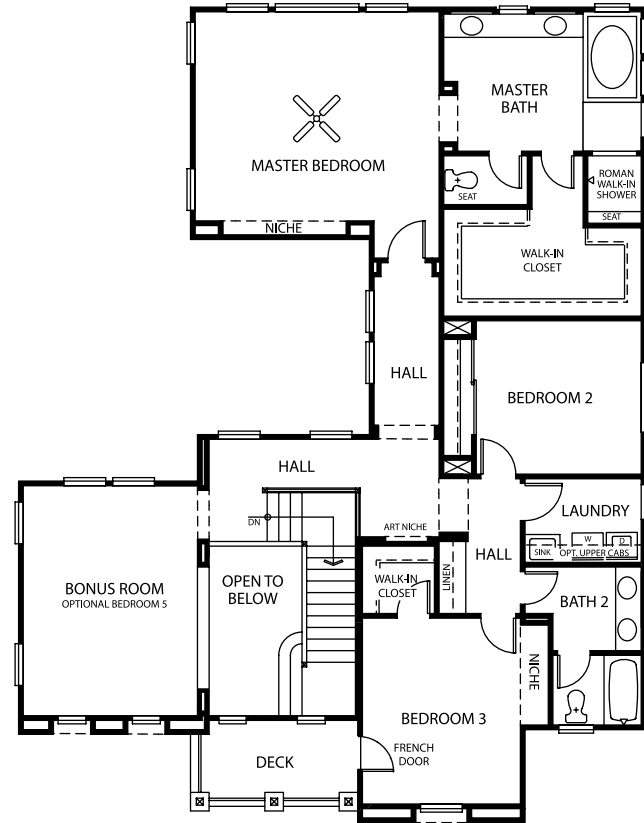
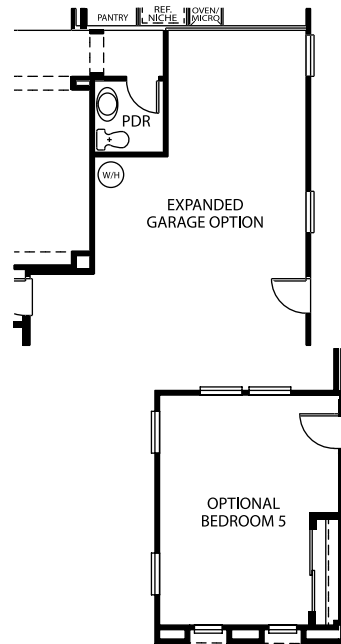
Three and a Half Baths

3,347 S.F. Approx.

 *Trésor at Madeira - Residence Three*



Lower Floor



Upper Floor

MONTEREY



CLASSIC ITALIAN

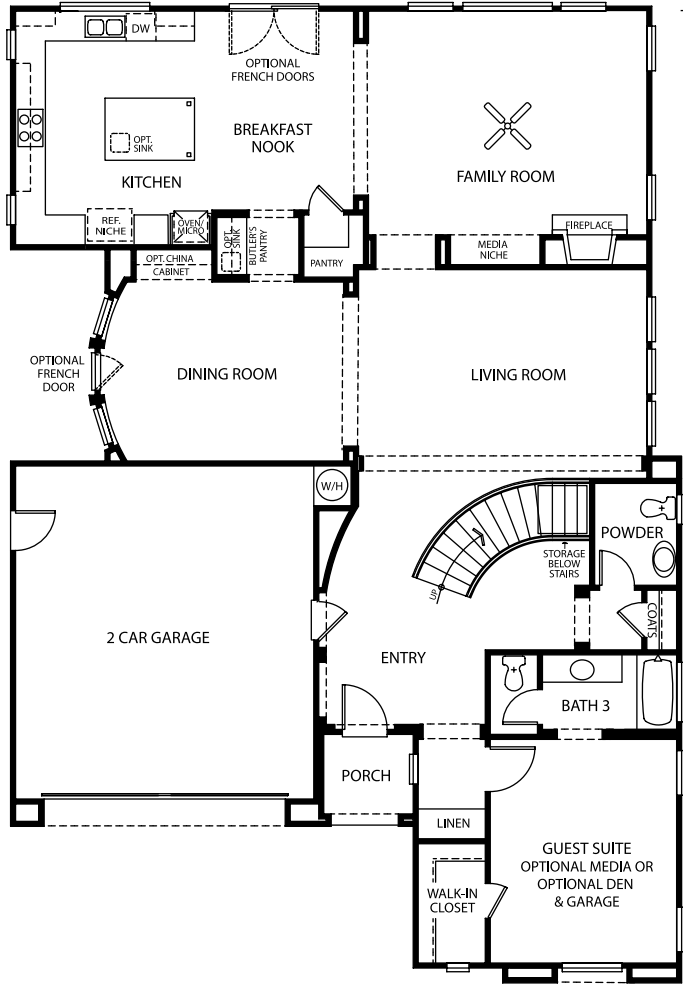



Trésor
AT MADEIRA
RESIDENCE FOUR
Four to Five Bedrooms
Three and a Half to Four and a Half Baths
3,699 S.F. Approx.

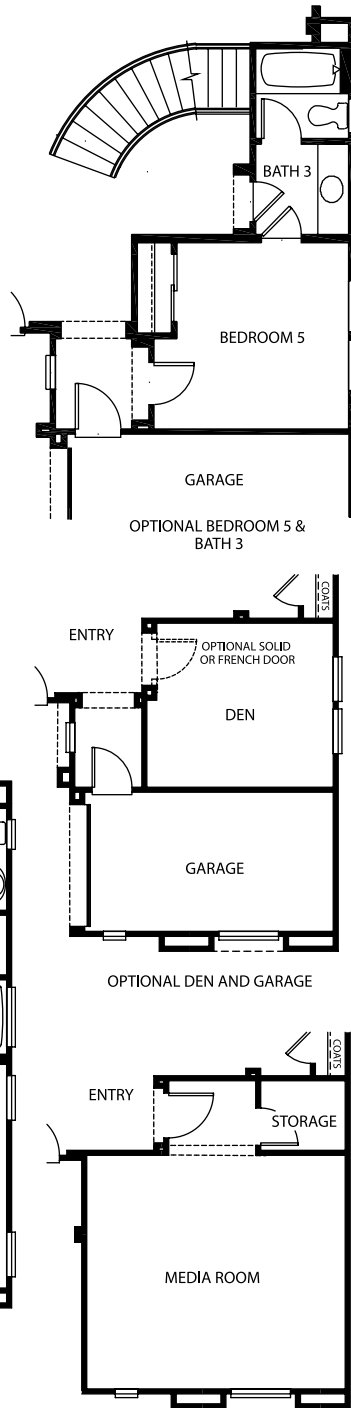
FRENCH COTTAGE



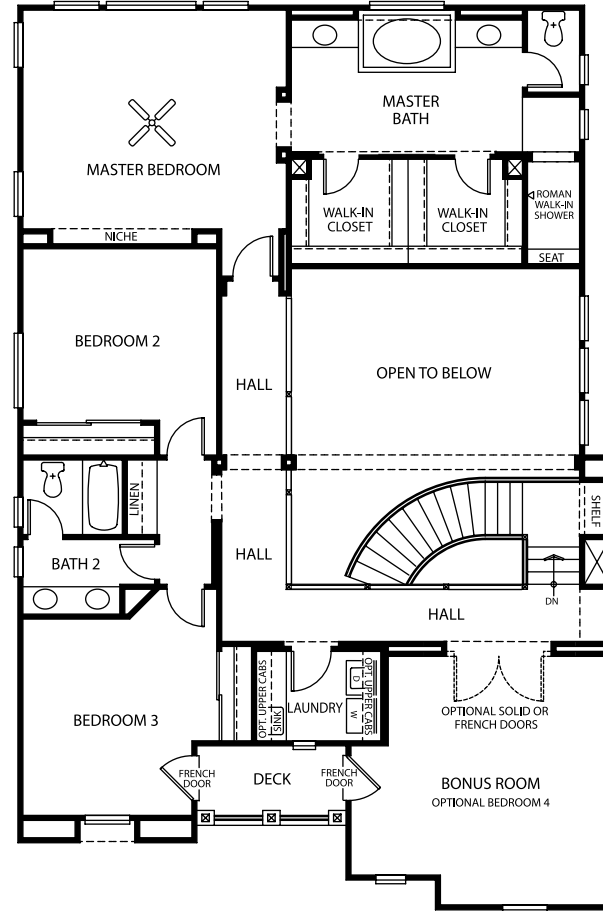
*Trésor at Madeira -
Residence Four*



Lower Floor



OPTIONAL MEDIA ROOM



Upper Floor



OPTIONAL BEDROOM 4

SANTA BARBARA



CLASSIC ITALIAN



FRENCH COTTAGE



Trésor
AT MADEIRA

RESIDENCE FIVE

Three to Five Bedrooms

Two and a Half to Three and a Half Baths

2,342 - 2,918 S.F. Approx.

**OPTIONAL
SECOND STORY**

SANTA BARBARA



CLASSIC ITALIAN

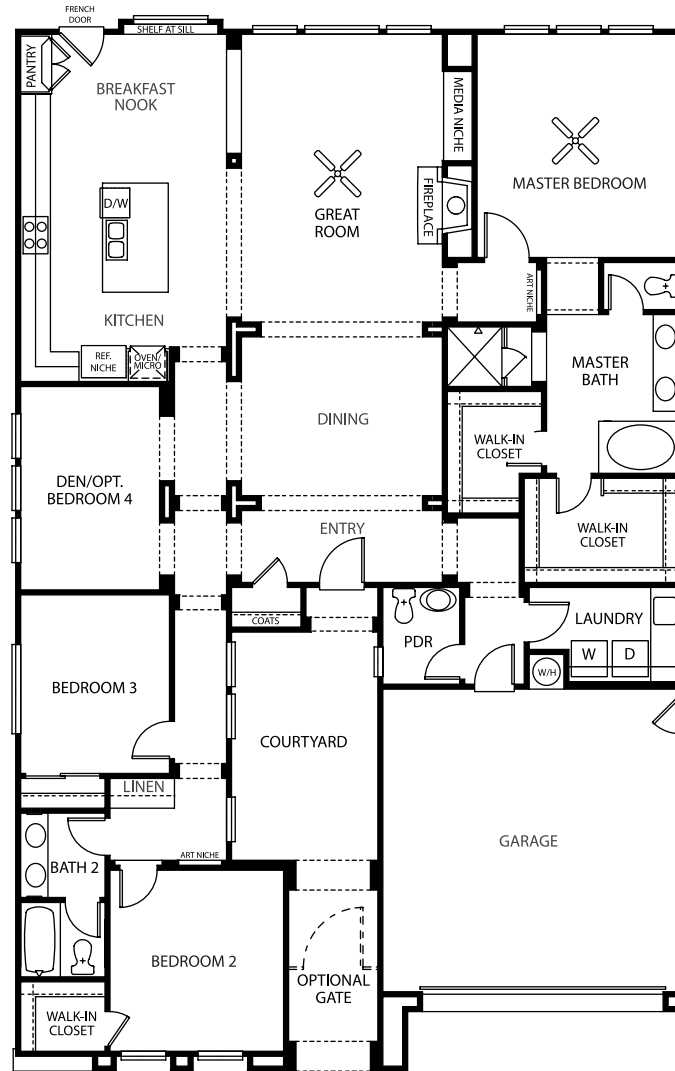
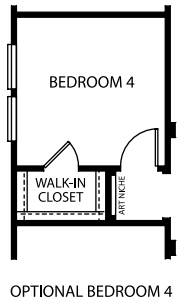


FRENCH COTTAGE

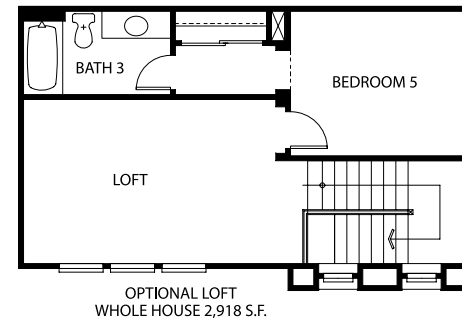
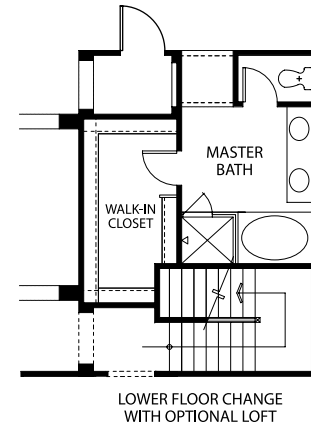


Layouts and renderings are provided for illustrative purposes only and may not be to scale. Square footage estimates are approximate and subject to change.

 *Trésor at Madeira - Residence Five*



Lower Floor



Optional Upper Floor

Our Story

CAMBRIDGE HOMES...BUILDING YOUR PERSONAL SPACE.

Founded in Sacramento, Cambridge Homes opened its doors with a single vision – to build architecturally-distinct homes that offer more. More architectural details. More standard amenities. More space planning options. More of the things we would want for our own families.

As a locally-owned and operated family business, we believe our responsibility extends beyond our homes. It is a priority for us to contribute to the communities in which we build, both through community involvement and enhanced community architecture. We specifically design our communities to provide a wealth of architectural diversity.

By providing distinctive architecture options and encouraging individual home personalization, our residences are as unique as the families who call them home. And each Cambridge home must pass the same rigorous test – it must be a home we would design and build for our own families.

It would be our privilege to build your personal space.



Our Values

CORE PURPOSE

TO IMPROVE THE QUALITY OF LIFE OF
OUR HOME BUYERS, OUR COMMUNITY AND OURSELVES.

CORE VALUES

LOYALTY

HONORING OUR COMMITMENTS AND EACH OTHER.

RESPECT

VALUING OTHERS. ACTIVELY LISTENING.
EMBRACING DIFFERENCES.

INTEGRITY

ACTING HONORABLY AND HONESTLY.

COMMUNITY

ENRICHING THE LIVES OF OTHERS.

FUN

LIVING PASSIONATELY AND LAUGHING OFTEN.